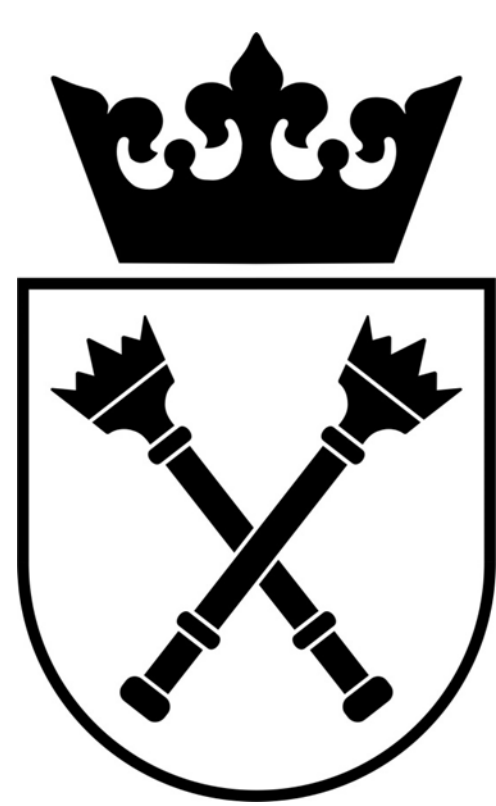


Solitary extramedullary plasmacytoma of palatine tonsil – rare but possible



Anna Suska¹, Sarah Goldman¹, Bogdan Małkowski², Rita Łopatto², Krzysztof Małecki³,
Krzysztof Halaszka⁴, Aleksander B. Skotnicki¹, Artur Jurczyszyn¹



¹ Department of Hematology, Jagiellonian University Medical College, Cracow, Poland

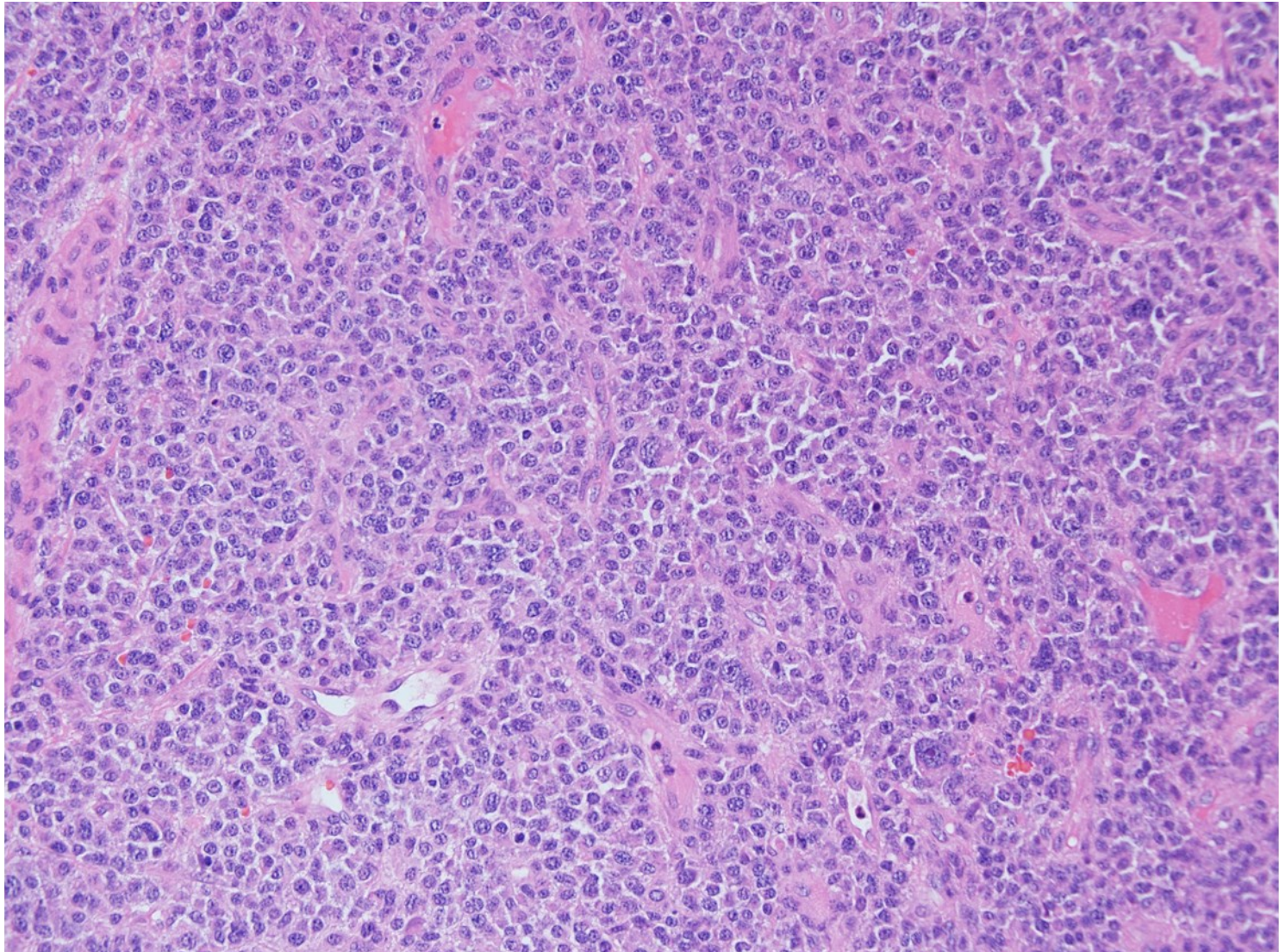
² Department of Nuclear Medicine, Oncology Centre, Bydgoszcz, Poland

³ Department of Radiotherapy, University Children’s Hospital of Cracow, Poland

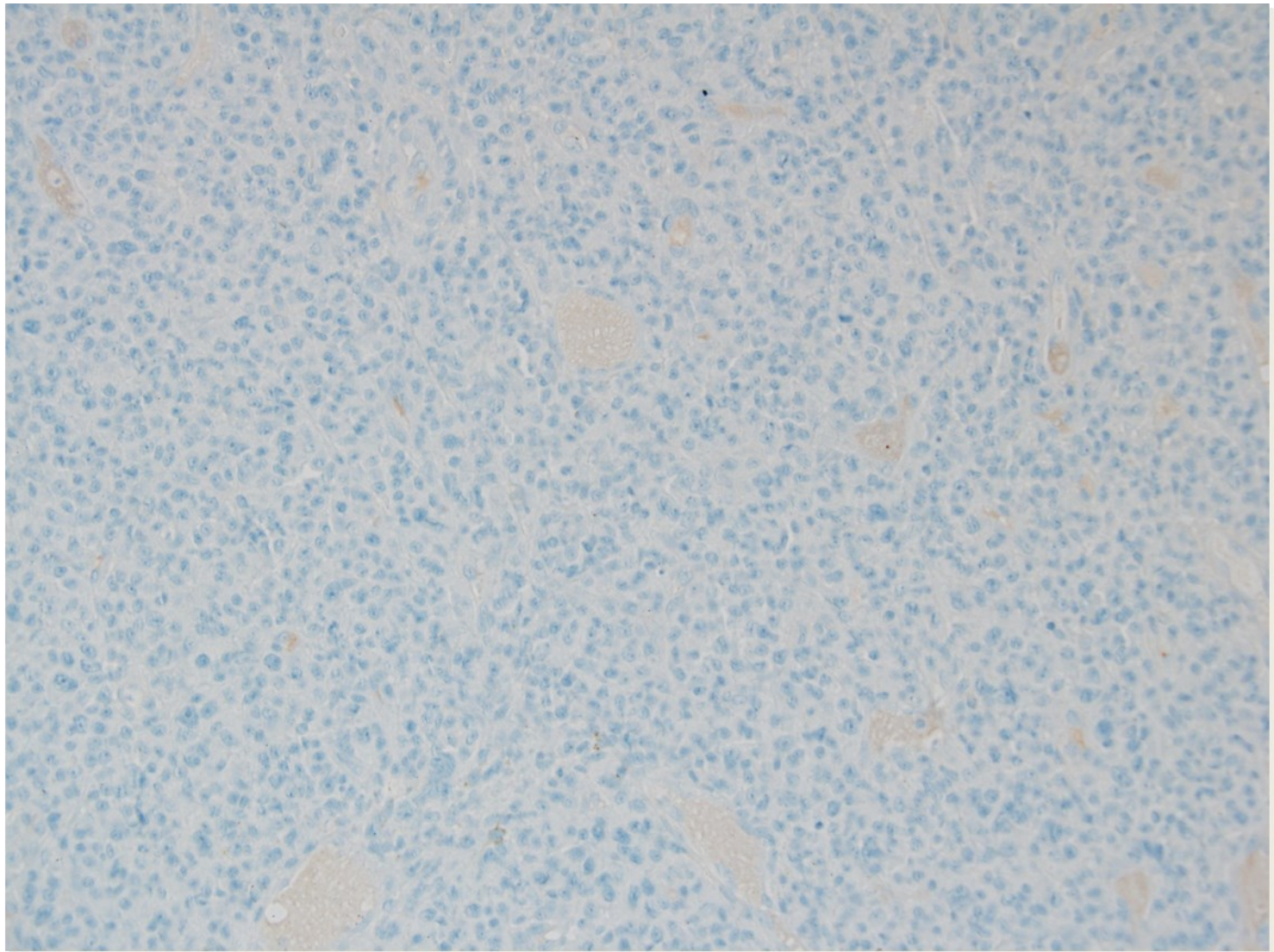
⁴ Department of Tumour Pathology, Maria Skłodowska-Curie Institute-Oncology Center, Cracow Branch, Cracow, Poland

The 48-year old man, with no past medical history, was admitted to the emergency department because of the spontaneous bleeding from the area of pharynx, without any other symptoms. Coagulation parameters: PLT 212 10³/ul [150-450], INR 1,01 [0,90-1,20], APTT 31.2 sec [26,0-36,0]. ENT examination revealed bleeding from a tumor mass of the left palatine tonsil. Further diagnostics including histopathological analysis, imaging and laboratory tests were performed.

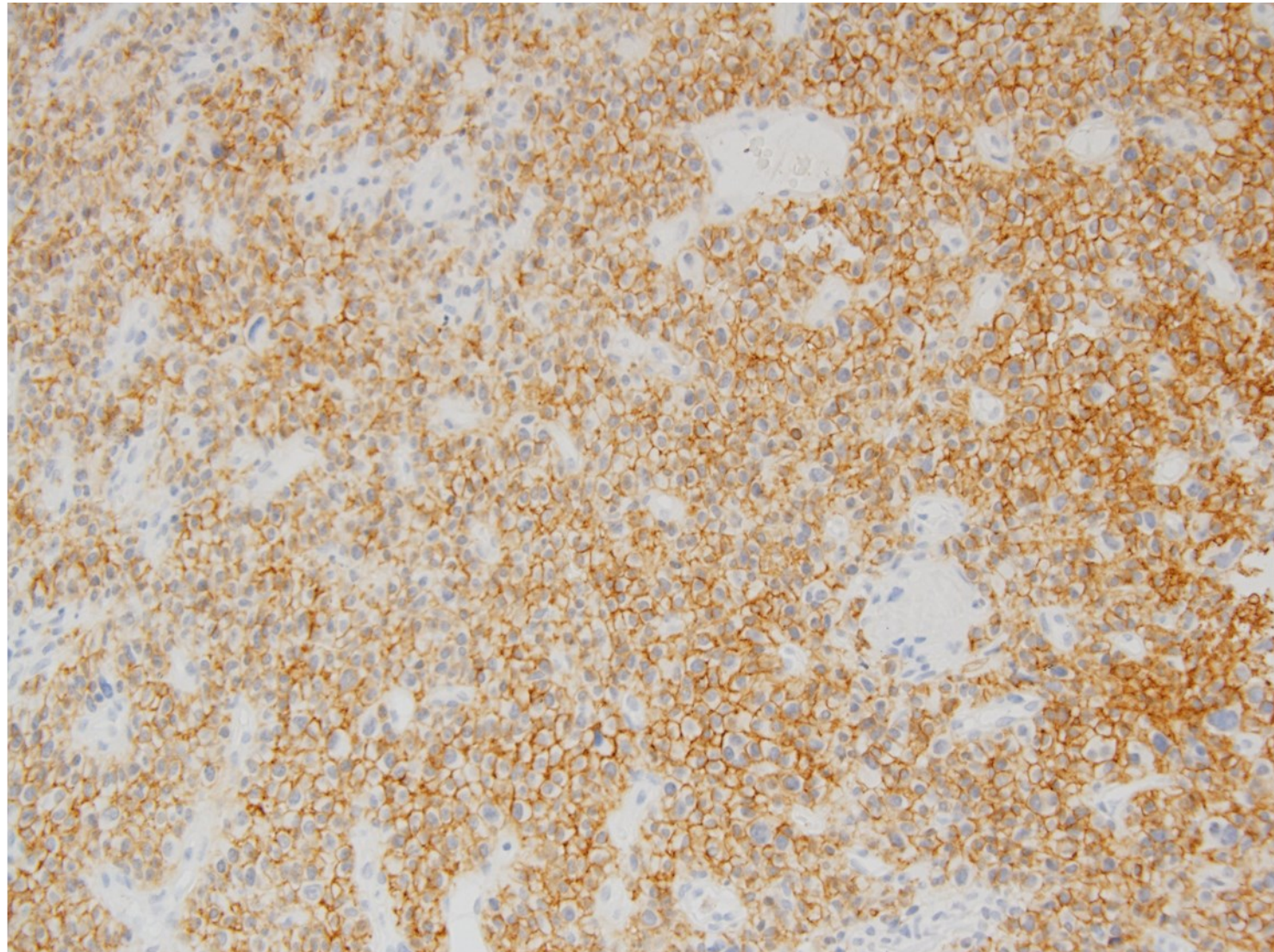
HISTOPATHOLOGY



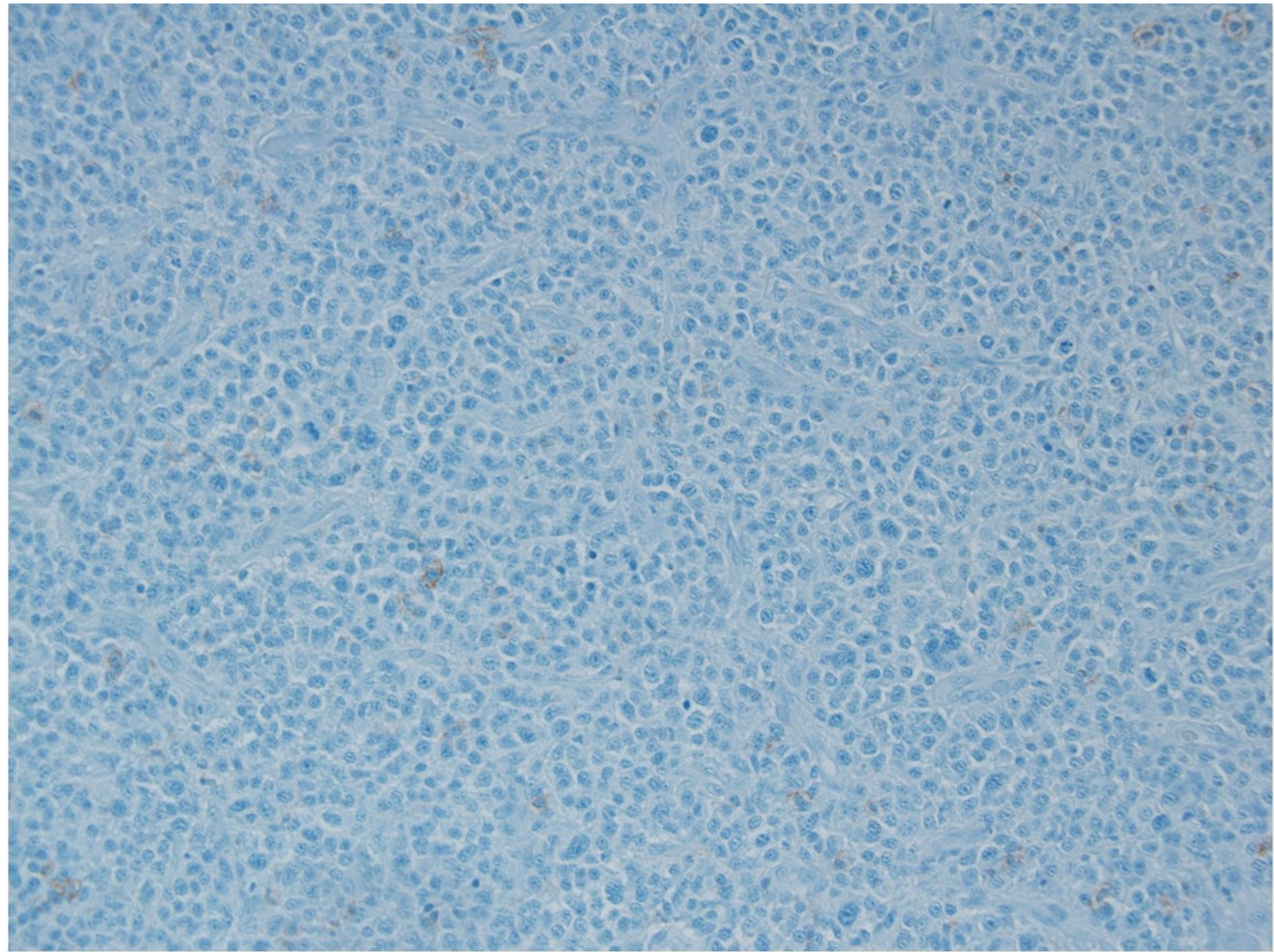
HE
Plasma cells with eosinophilic cytoplasm and round nucleus with fine-grained chromatin. Some of the cells present with nuclear polymorphism - a larger nucleus with a single eosinophilic nucleolus.



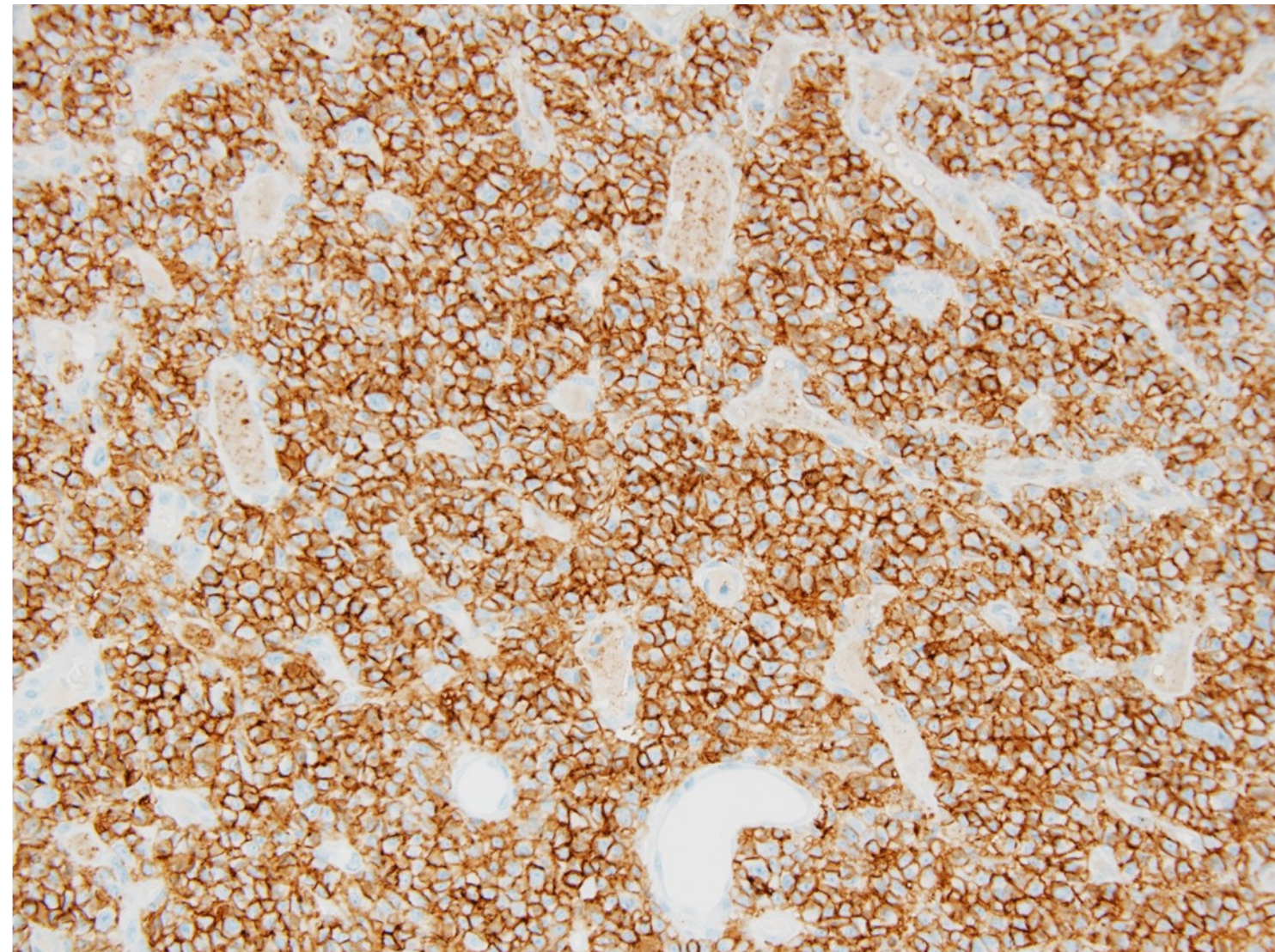
IHC: CD20 negative



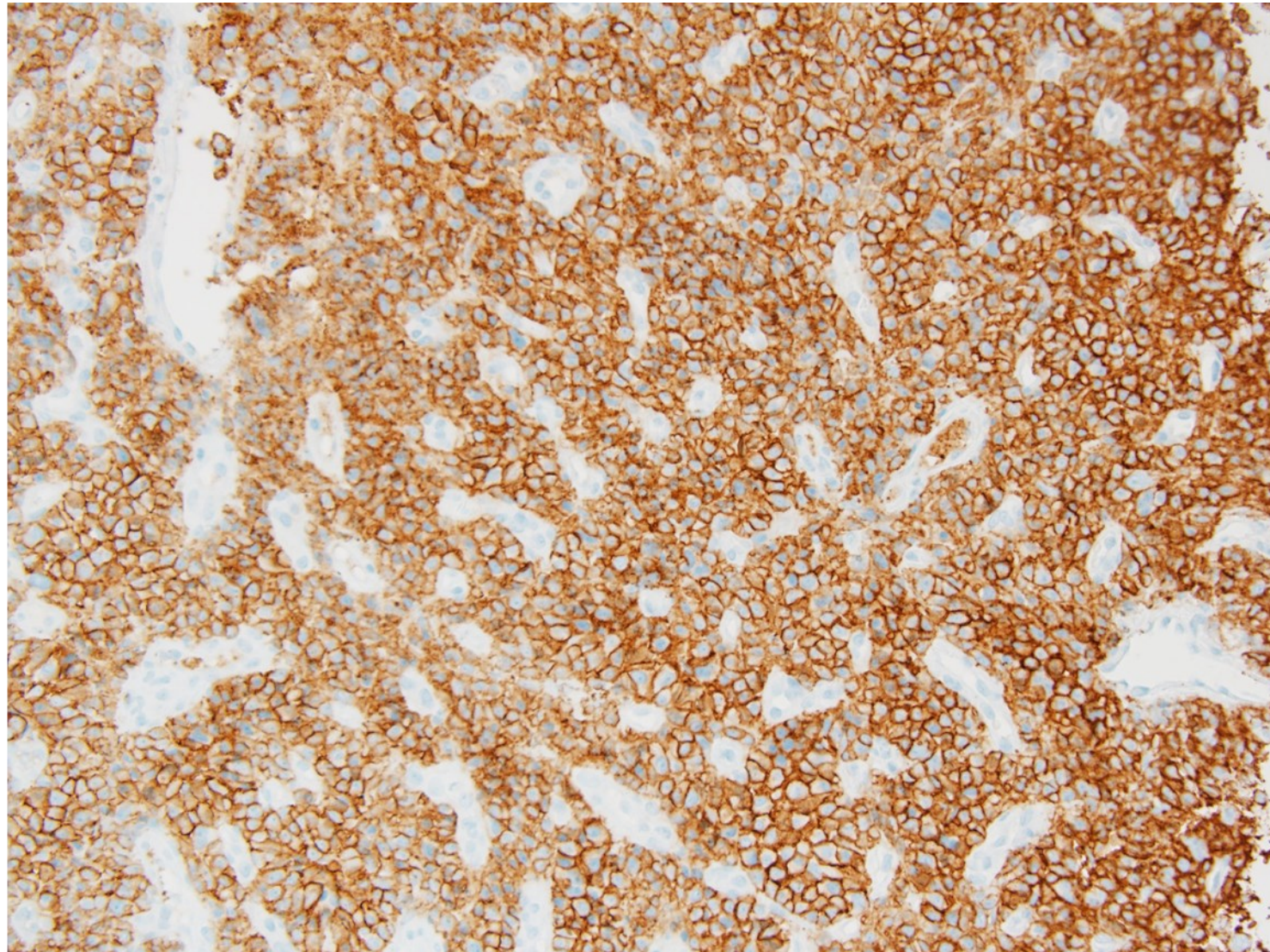
IHC: CD38 positive



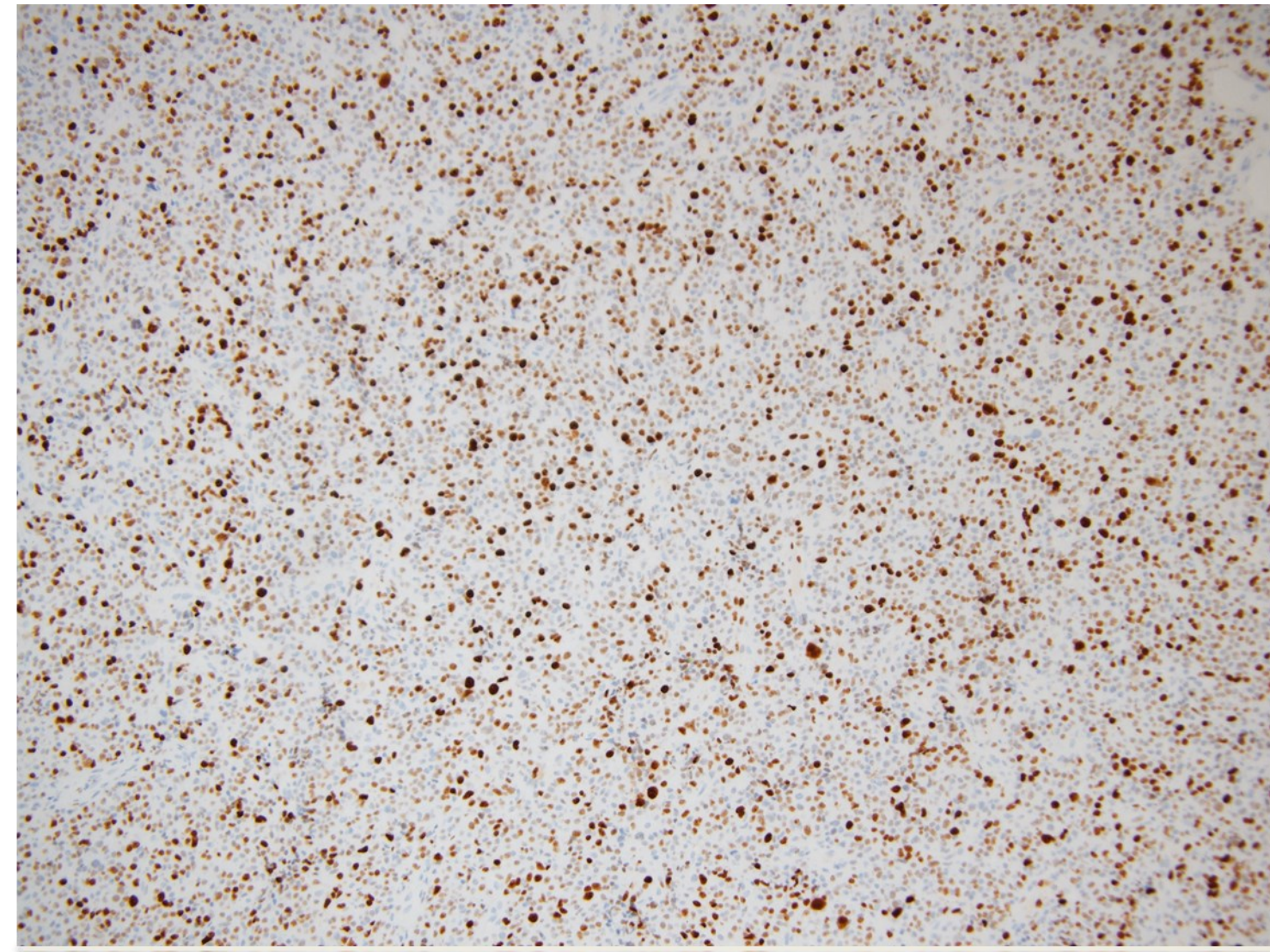
IHC: CD45 negative



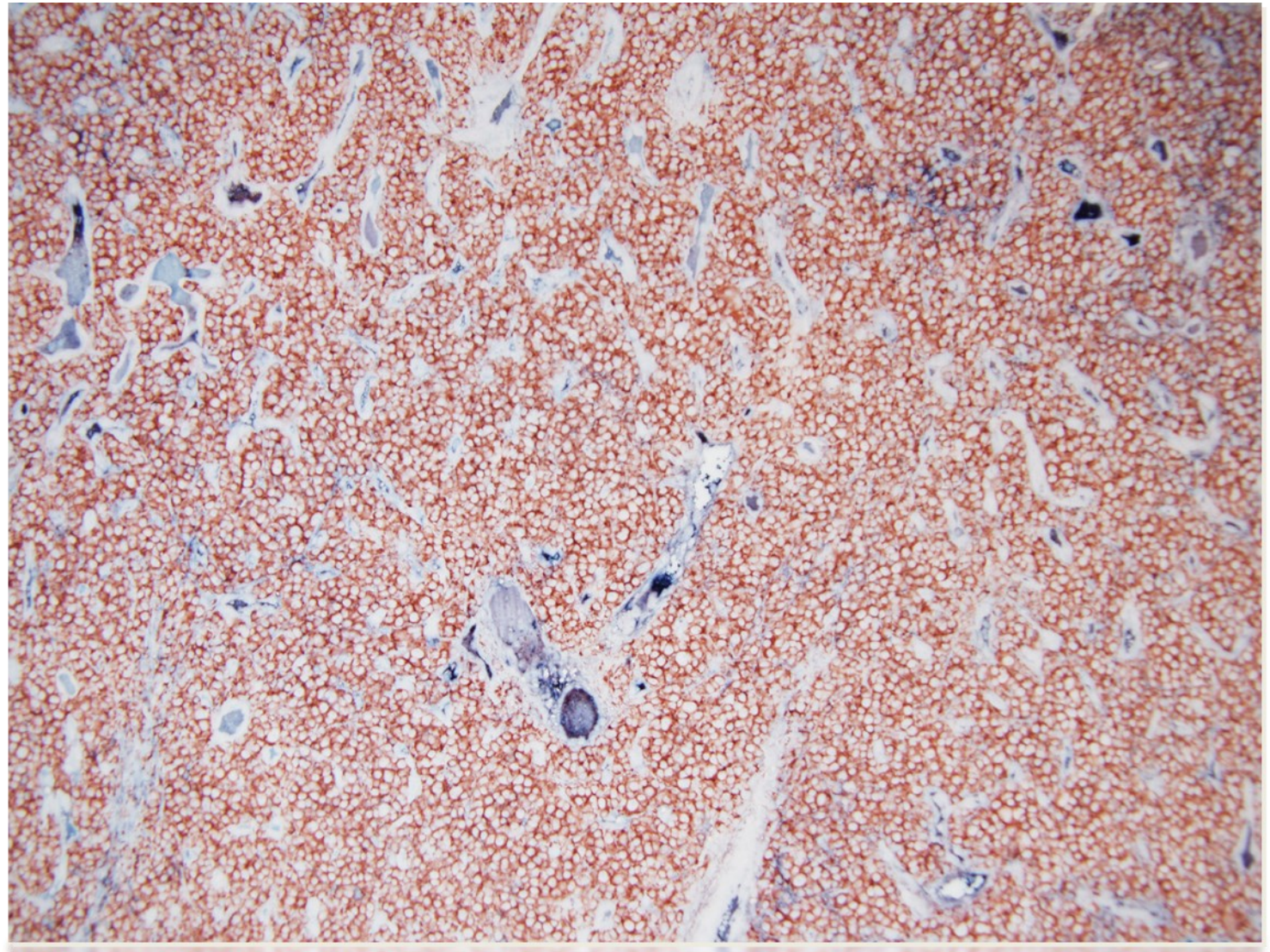
IHC: CD56 positive



IHC: CD138 positive

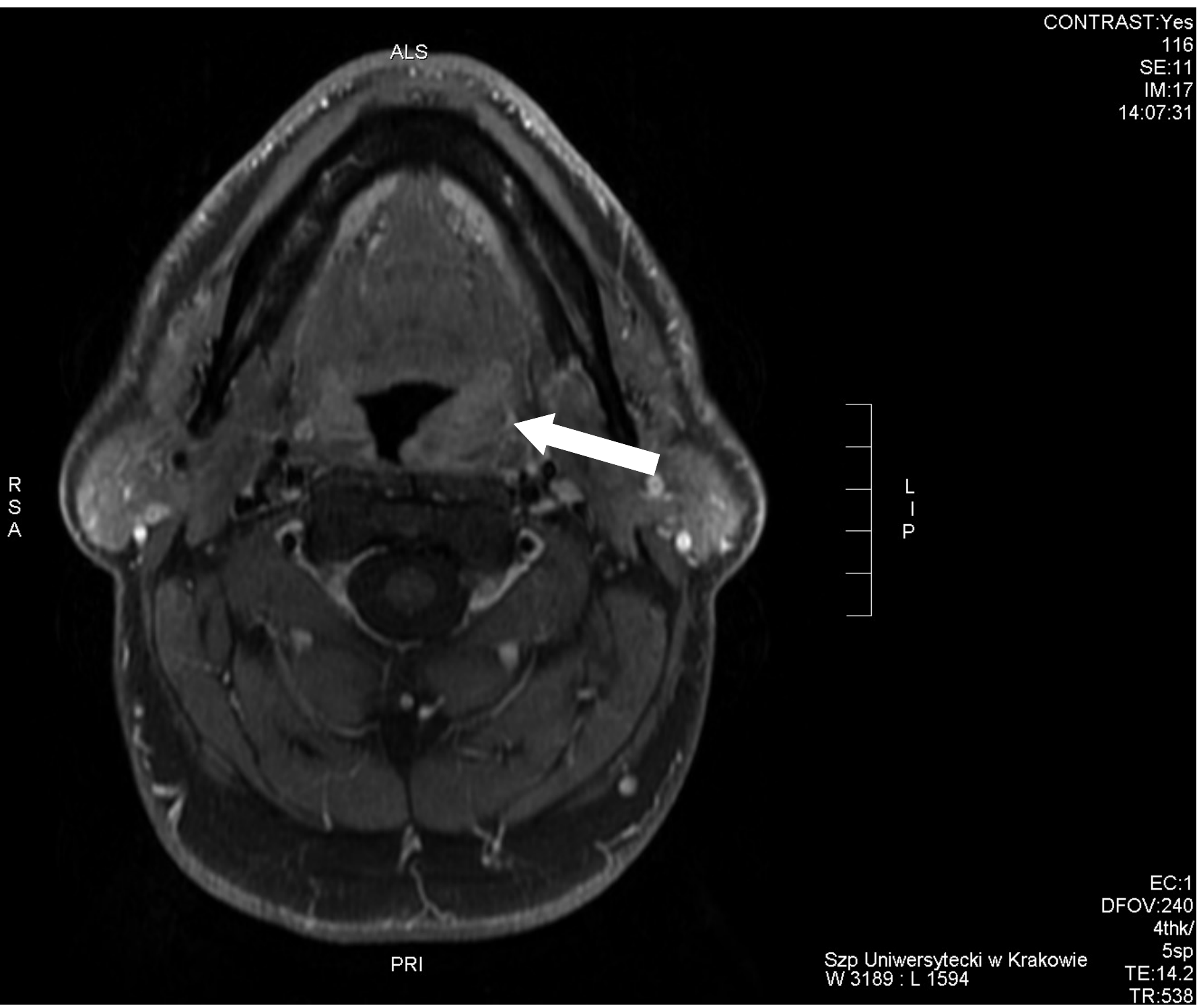


IHC: Ki67 50-60%



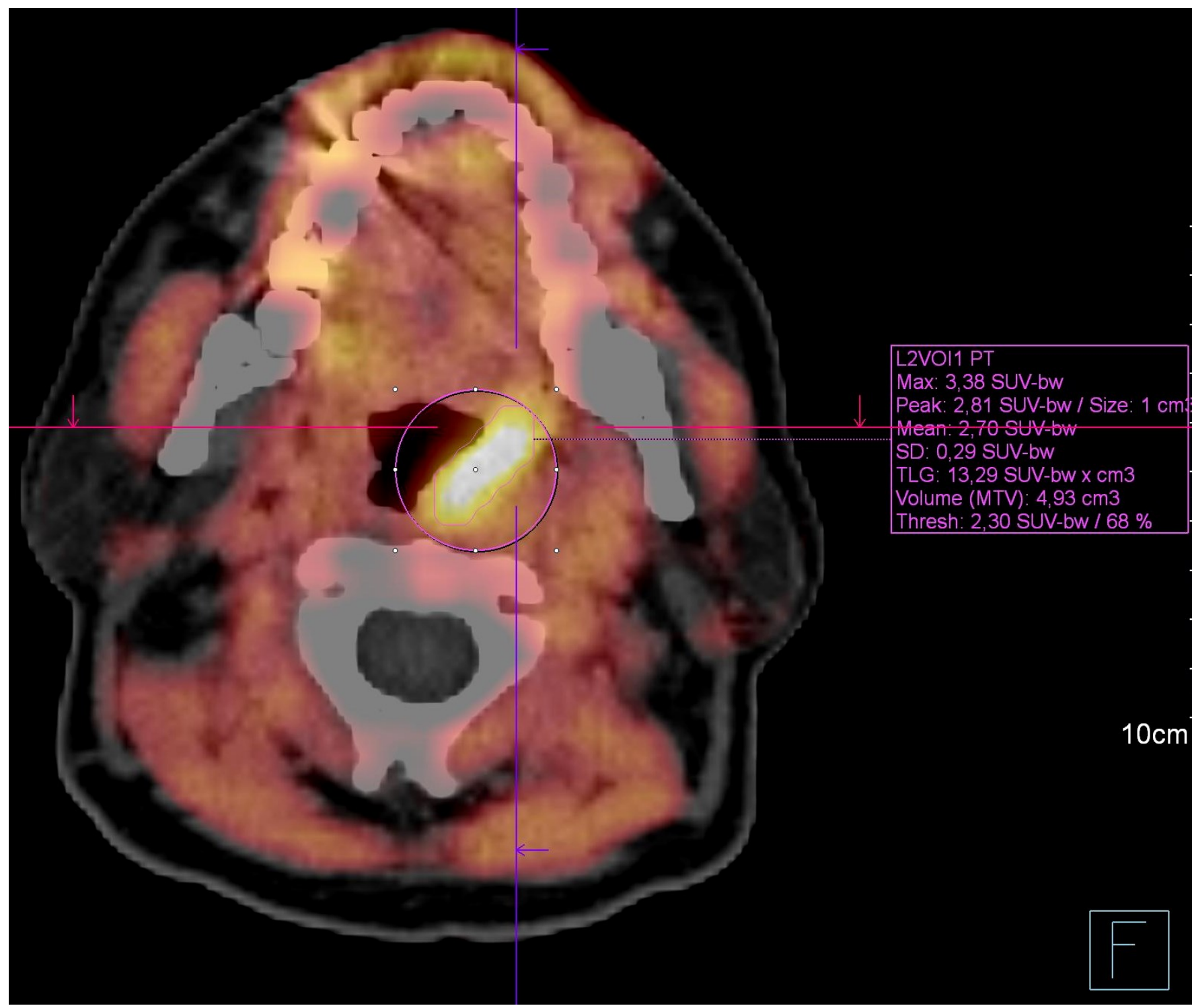
IHC: κ light chain restriction

RADIODIAGNOSTICS



MRI

An exophytic lesion with uneven contours, localized on the dorso-left wall of the oropharynx in communication with the left palatine tonsil, spreading downwards the epiglottis, with no sign of invasion. Moderate diffusion restriction with the post-contrast enhancement.



PET/CT

A focus of increased uptake of the tracer in the left palatine tonsil (max. SUV 3.38)

LABORATORY TESTS

Bone marrow aspiration cytology and trephine biopsy presented without pathology. Serum protein electrophoresis was normal, serum immunofixation - negative. No features of SLiM CRAB symptoms.

TREATMENT

Not considered a candidate for tonsillectomy due to locally advanced neoplastic process → qualification for the curative radiotherapy.

CONCLUSIONS

Solitary extramedullary plasmacytoma is a rare plasma cell tumor involving soft tissues without any sign of systemic disease. The differential diagnostics of the solitary extramedullary plasmacytoma of palatine tonsil includes reactive processes, carcinoma and lymphoma. Histopathological examination in connection with laboratory tests and radiodiagnostics is of key importance.

1. Bachar G, Goldstein D, Brown D et al. Solitary extramedullary plasmacytoma of the head and neck - long-term outcome analysis of 68 cases. Head Neck. 2008 Aug;30(8):1012-9. 2. Venkatesulu B, Mallick S, Giridhar P et al. Pattern of care and impact of prognostic factors on the outcome of head and neck extramedullary plasmacytoma: a systematic review and individual patient data analysis of 315 cases. Eur Arch Otorhinolaryngol. 2018 Feb;275(2):595-606.